



ONE QUEEN EAST

NEW 320,000 SQ. FT. BLOCK OF "A" CLASS SPACE

CBRE

FOR LEASE

— BUILDING DESCRIPTION —

Built in 1991, 1 Queen Street East is an **“A” Class** Building, conveniently located with direct connection to the Queen Street Subway Station. This **LEED Gold** EB, BOMA Best, and **PATH connected** building, features **“end-of-trip”** facilities such as showers, change rooms, and a secured bicycle storage. In addition, it includes building concierge services and a direct connection to the Eaton Centre.

1 Queen Street East will be undergoing a **lobby modernization** that will include a revitalized mezzanine tenant amenity space, additional soft seating throughout the lobby to encourage collaboration, a feature wall that will integrate pops of colour, trees and biophilia and the introduction of lighting and art to improve the visual experience for tenants and visitors alike.



Lobby



Feature Wall



Concourse

BUILDING FEATURES



Indoor Terrace & Amenity Spaces



Building Signage Opportunity



Concourse to Eaton Centre



Building Concierge & Security on-site



PATH Connected



Lobby Renovations



Centrally Located



Outdoor Green Space



Bike Storage



Showers



Leed Gold

Walk Score



100

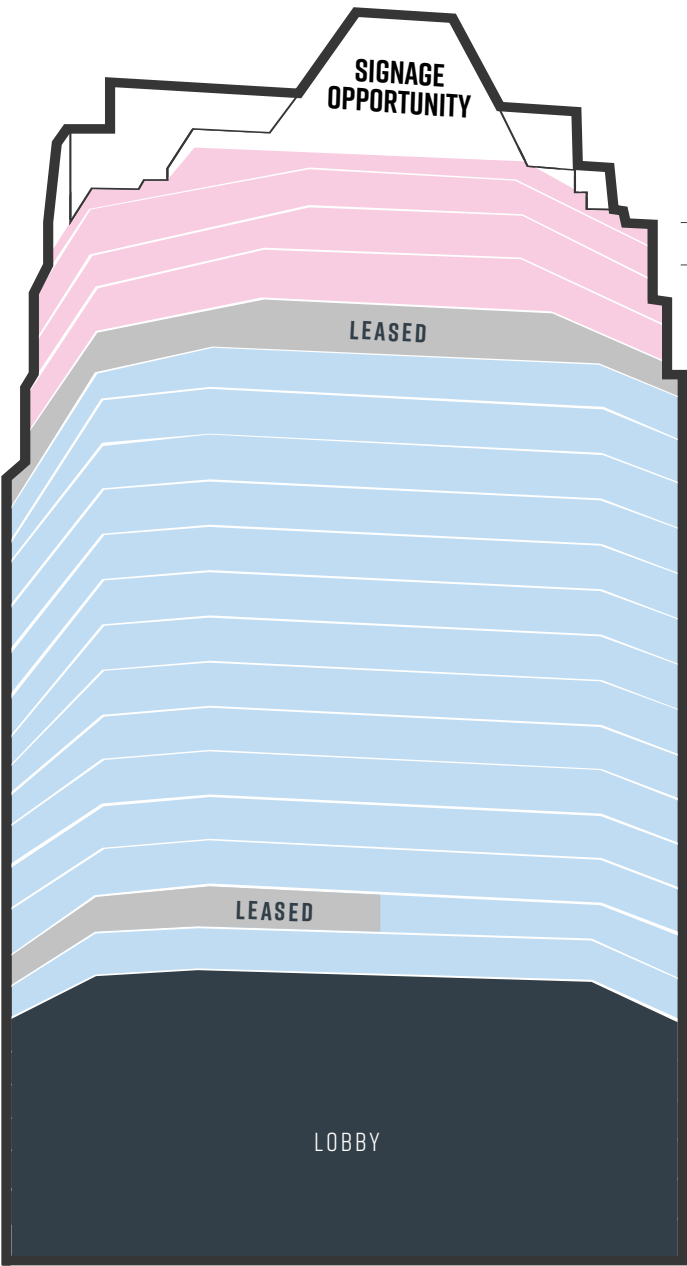
Transit Score



100

— STACKING PLAN —

LARGE BLOCK CLASS A OPPORTUNITY



FLOOR	RENTABLE SQ. FT.
27	12,829
26	16,174
25	16,132
24	17,614
23	18,932
22	18,932
21	18,932
20	18,932
19	18,932
18	18,932
17	18,909
16	18,909
15	18,909
14	18,909
12	18,909
11	18,909
10	18,909
9	10,784
8	18,909

- LEASED
- 256,716 SQ. FT. AVAILABLE
- 62,749 SQ. FT. AVAILABLE

AVAILABILITY DETAILS

Contiguous Blocks

Floors 8 - 22	256,716 sq. ft.
Floors 24 - 27	62,749 sq. ft.

Floors 8 - 22, 24 - 27	319,465 sq. ft.
------------------------	-----------------

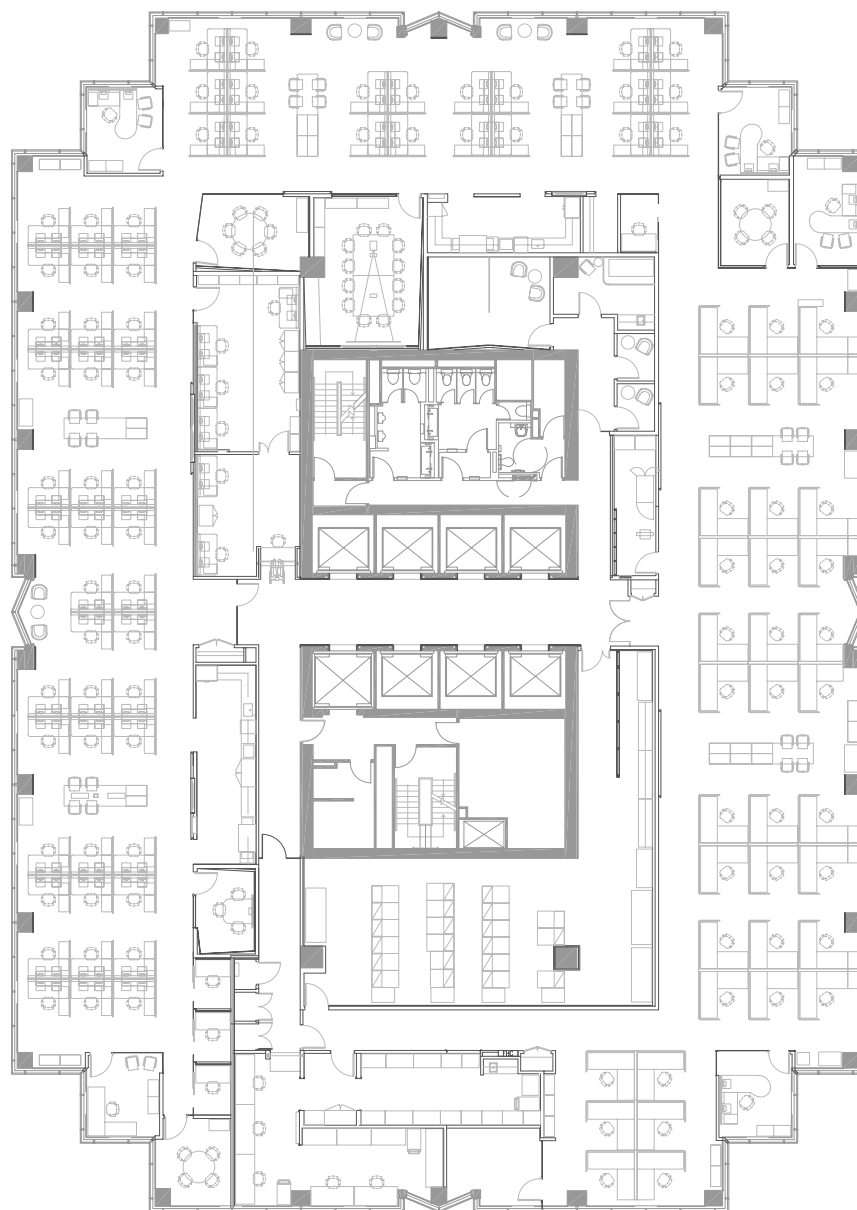
Available	Q3 - Q4 2026
-----------	--------------

Rent	Call to discuss
------	-----------------

Parking	Multi-level underground parking
---------	---------------------------------

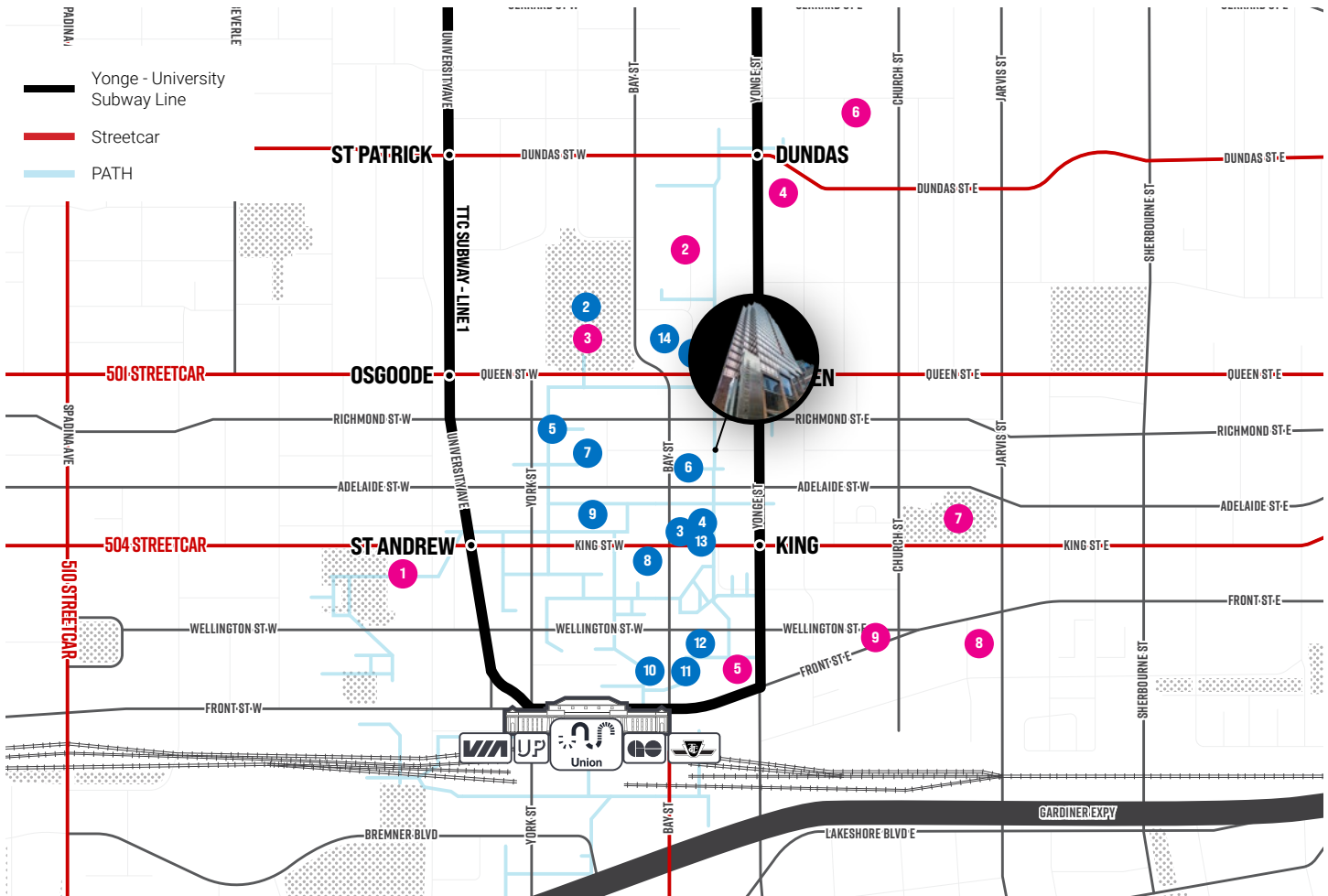
— SAMPLE FLOOR PLAN —

EFFICIENT FLOOR PLATES



— AMENITIES —

BEST-IN-CLASS NEIGHBOURHOOD



NEIGHBOURS

- | | |
|-----------------------------|---------------------------------|
| 01. Cadillac Fairviews | 08. TD Bank |
| 02. Toronto City Hall | 09. BMO |
| 03. The Bank of Nova Scotia | 10. RBC Bank |
| 04. Accenture | 11. BlackRock |
| 05. Google | 12. Brookfield Asset Management |
| 06. KPMG | 13. Northleaf Capital |
| 07. EY | 14. Air Canada |

LANDMARKS

- | | |
|----------------------------|-------------------------------------|
| 01. Massey Hall | 06. Toronto Metropolitan University |
| 02. Toronto Eaton Centre | 07. St James Park |
| 03. Nathan Phillips Square | 08. St. Lawrence Market |
| 04. Yonge-Dundas Square | 09. Gooderham Building |
| 05. Hockey Hall of Fame | |



ONE QUEEN EAST

Jeff Friedman*
Vice Chairman
+1 416 815 2363
jeff.friedman@cbre.com

Brian Porter*
Senior Vice President
+1 416 417 0395
brian.porter@cbre.com

Michael Spence*
Vice President
+1 416 815 2379
michael.spence@cbre.com

* Sales Representative

CBRE

CBRE LIMITED, REAL ESTATE BROKERAGE | 145 KING STREET WEST | SUITE 1100 | TORONTO, ONTARIO CANADA, M5H 1J8 | +1 416 362 2244 | WWW.CBRE.CA

This disclaimer shall apply to CBRE Limited, Real Estate Brokerage, and to all other divisions of the Corporation, to include all employees and independent contractors ("CBRE"). All references to CBRE Limited herein shall be deemed to include CBRE, Inc. The information set out herein, including, without limitation, any projections, images, opinions, assumptions and estimates obtained from third parties (the "Information") has not been verified by CBRE, and CBRE does not represent, warrant or guarantee the accuracy, correctness and completeness of the Information. CBRE does not accept or assume any responsibility or liability, direct or consequential, for the Information or the recipient's reliance upon the Information. The recipient of the Information should take such steps as the recipient may deem necessary to verify the Information prior to placing any reliance upon the Information. The Information may change and any property described in the Information may be withdrawn from the market at any time without notice or obligation to the recipient from CBRE. CBRE and the CBRE logo are the service marks of CBRE Limited and/or its affiliated or related companies in other countries. All other marks displayed on this document are the property of their respective owners. All Rights Reserved. Mapping Source: Google Earth